



DOCKSTOP
—    —



DOCKSTOP
—    —

SALON ZA IDEJE LHC d.o.o.

Visnjicka 25
11000 Beograd
Srbija
office@lhc.rs
www.lhc.rs
tel. +381 11 41 42 440
Gsm. -381 63 266032
www.dock-stop.com



DESIGNED AND
MANUFACTURED BY



DOCKSTOP



DOCKSTOP BASIC

DOCKSTOP

DOCKSTOP sanitary station is made for servicing of motorhomes with water, electricity and disposal of gray and black water. It can be found at camp sites, public parking places, marines, parking areas of gas stations, hotels and even shopping malls.

It represents a perfect solution since all four necessary features are implemented in one station.

- Four power outlets for electricity
- Taps for fresh water
- Black tank disposal system
- Gray tank disposal system

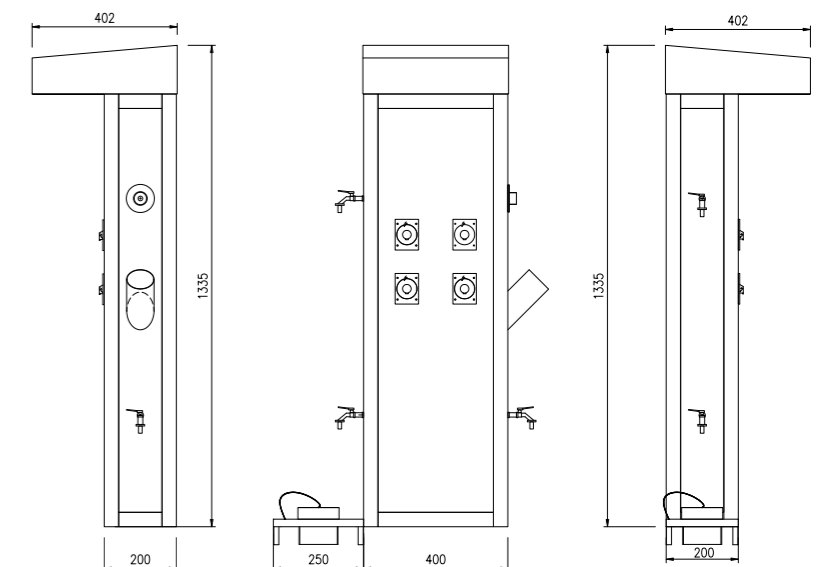
While most of the camping sites are equipped with electricity stations, black and gray water disposal are done in a different part of the camp. Therefore, a vehicle must be moved, and this can sometime take lots of effort and time. The station brings a new concept of functioning for camp sites and parking places. One DOCKSTOP can service up to 4 motorhomes at the time at one place so the vehicles do not have to be moved at all.

Certainly, initial setup of the station might make some additional investment due to a possible underground installation. However, the price of this investment can be repaid with slightly higher charging fees by the camp for a comfort DOCKSTOP has to offer. TV and Internet could also be implement in the sanitary station by request.

DOCKSTOP BASIC

Basic DOCKSTOP Model includes:

- 4 power outlets with 16A charging power per outlet
- 1 fresh water tap ½ on the left side of the station
- 1 black tank disposal system with pipe ½ and splash. Additional water tap for rinsing of black tank is at the right side of the station, exactly at the height where black tank can be laid on the ground
- 1 heating system for maintaining a right temperature of the sanitary station during the winter and in the cold climate areas
- 1 gray tank disposal at the level 0 suitable for European and American standard
- 1 LED Lighting of 20W for night operations



ATEST INFO

Dockstop is matching European Union Quality Standards, which was verified by attaining a Quality Certificate from Strojírenský zkušební ústav, s.p. (SZU), Hudcova 424/56b, CZ-621 00 Brno, Czech Republic.

MATERIAL

Dockstop sanitary station is made of vandal-proof stainless steel (AISI 304) with 0.8-1mm thickness, which guarantees an exceeding product durability. Dimensions of the station are 1335x400x200mm (H' W' D'). The stability is attained by fixing the station to a concrete base with dimensions 477x585x385, which can be custom made to match the underground installation of the parking place.

ELECTRICITY

Each DOCKSTOP can have maximum of four Schneider CEE category power outlets with 16A, 230V strength. Power meter from Schack brand or similar, for the measurement and control of electricity use, can be installed inside of the station by request. Also, coin validator for charging the electricity use with coins or tokens, can be added to the right side of the sanitary station.

FRESH WATER

One fresh water tap with 2,5 m³/h conductivity is installed on the left side of the DOCKSTOP station. To keep the safe distance of fresh water from disposal pipes an interior installation is separated in two completely different parts. Certainly, coin validator can also be added for charging of water use with coins or tokens from 0,50 € up to 2 €. In this way, a personal sale cost can be fully eliminated.

BLACK TANK

Disposal pipe of $\varnothing 76$ mm volume for cleaning of a black tank is placed on the left side of the DOCKSTOP sanitary station. The latter is suitable for both European and American standards. When the waste from black tank is disposed the flush button above shall be manually pressed to clean the disposal pipe from inside. To stop the smell an iron steel cover should be placed on the top of the pipe. Another fresh water tap for rinsing the black tank is below the disposal pipe. The black tank can be placed on the ground while rinsing, which is helpful for elderly people with back problems.

GRAY TANK

Disposal installation for gray tank is placed on the ground at the right side of the DOCKSTOP sanitary station. Gray tank, containing water from shower and sink is disposed through iron steel installation with dimensions $\varnothing 110$ mm. Another water tap above can be easily used for rinsing of the disposal pipe without making any contact with fresh water.

HEATING

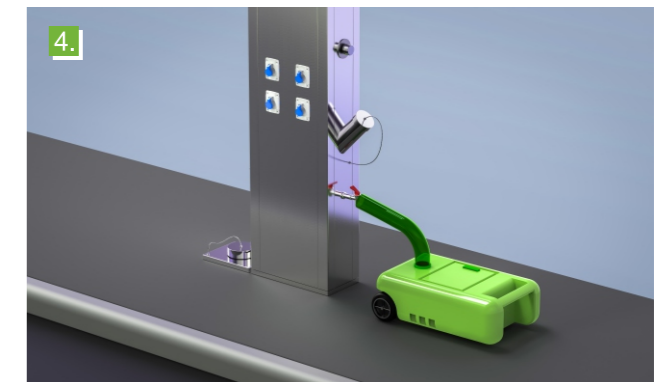
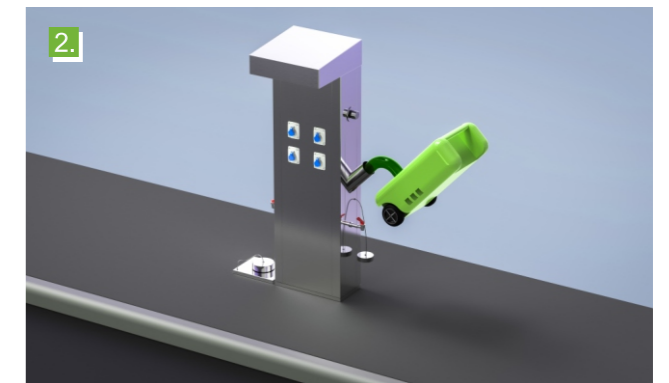
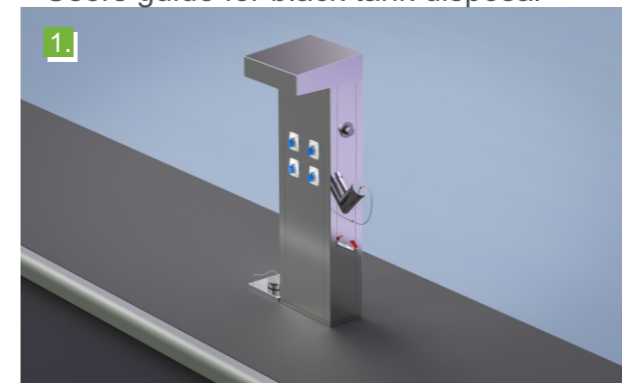
A heater of 60 W, similar category as FINDER, is built inside of the DOCKSTOP together with thermostat of IP20 to keep a station warm during cold winter months. The station is resistant to all weather conditions. The heating system prevents a water system from freezing on temperatures below 0°C.

LIGHTING

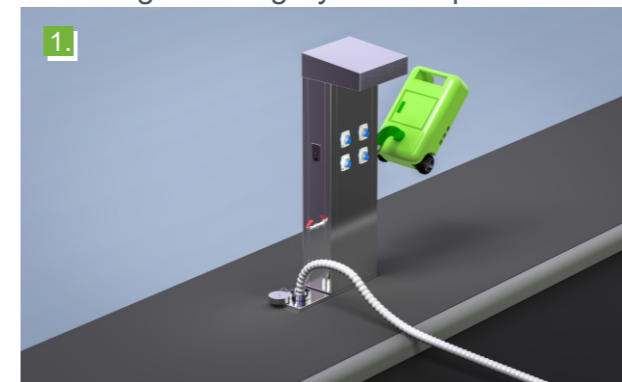
For a night operations and a better marking on the road or parking a special LED lighting of 20W is built on the upper side of the station.

STANDARD OPERATING PROCEDURE

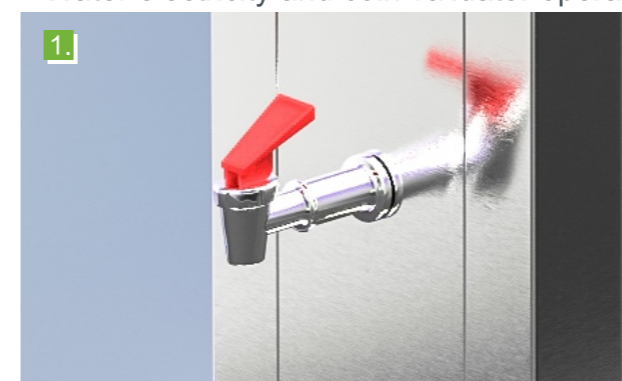
Users guide for black tank disposal



Users guide for gray tank disposal

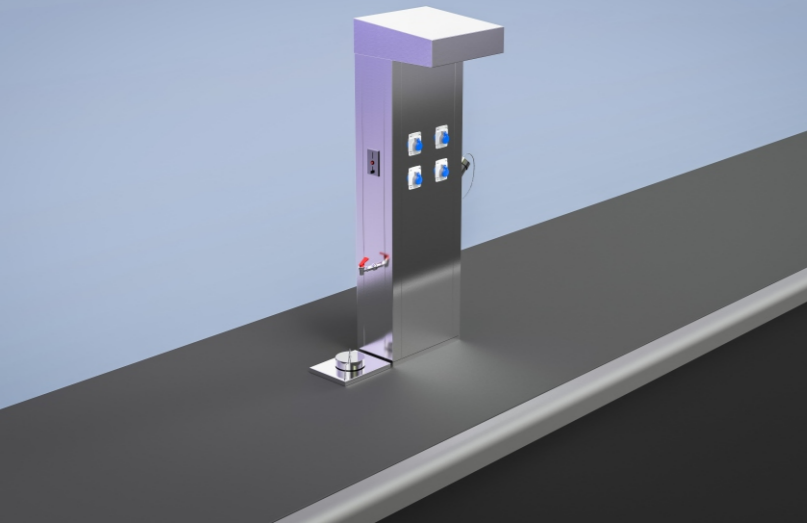


Water electricity and coin validator operation

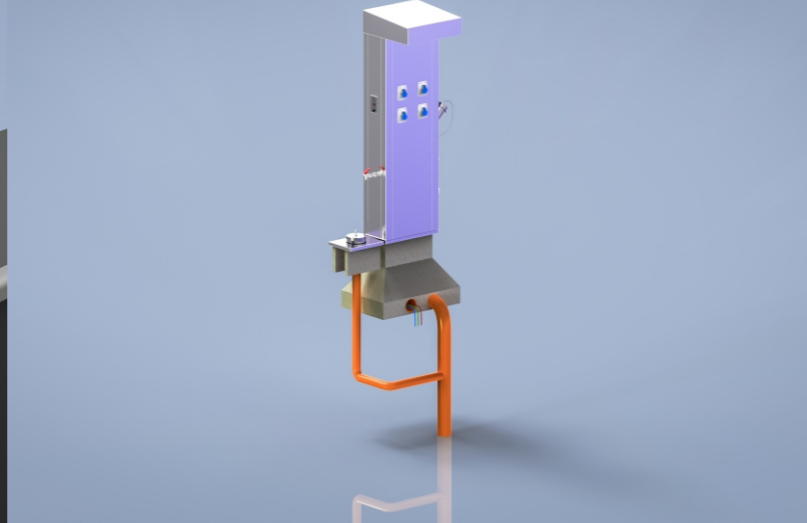


UNDERGROUND INSTALLATION AND CONNECTIONS

INSTALLED SANITARY STATION DOCKSTOP



UNDERGROUND INSTALLATION NETWORK



DOCKSTOP is custom made by request of each client individually! Now you can choose and combine elements that you need on your DOCKSTOP! Optional elements are listed below.

INFRASTRUCTURE AND UNDERGROUND INSTALLATION FOR DOCKSTOP

The new concept of a sanitary station where 4 functions are available in 1 station requires a matching installation, depending on the local requirements and regulations.

CONCRETE BASE

Dockstop is fixed on the base, made from armoured concrete and installed in the ground. Four threaded rods are connecting the iron base with the concrete base, thus giving the full vandal-free stability to the station. Water pipes and current installation is brought to the station through a matching holes in the concrete base, custom made according to the requirements of a parking place.

DRAINAGE SYSTEM FOR GRAY TANK DISPOSAL

Dockstop station is connected to the local sewage by an underground network of conduit. Due to the local regulations a disposal can also be stored in a septic tank for a primary treatment. In this case an underground installation of conduit is also required. Dockstop is connected with underground system with PVC pipes of \varnothing 110mm or more.

UNDERGROUND SYSTEM FOR BLACK TANK DISPOSAL

According to the local requirements and regulations a black tank can be connected by the pipes of \varnothing 50mm to the sewage used also for the gray tank. On another hand, disposal of the black tank can also be stored in the septic tank for a further treatment.

WATER SUPPLY NETWORK

The station is connected to the water supply network with conduit pipes of \varnothing 3/4" or \varnothing 1", depending on the number of fresh water taps.

ELECTRICITY SUPPLY

Power cable is brought to the main switch through the special installation hole in the concrete base. From this point all power outlets and heating system are supplied with electricity. Emergency switch, placed outside on the front side of the station, should turn all power outlets and heating system off. This way all damages with electricity can be avoided.

WI-FI and TV INSTALLATION

Wi-fi as well as TV installation can also be added to the Dockstop station by request. Maximally four TV cable connectors can be added per station.



Aqua flush for black and gray disposal pipes cleansing



Electricity meter inside of the station for control of electricity use



Coin validator for automatic charging of water use with coins or token



Up to four power outlets per station can be added by request



Additional heating for cold climate regions is recommended



Master switch situation turns power off completely in case of emergency



Additional LED lighting for more visibility and night operations



More water taps for fresh water or rinsing can be added by request



Thermostat automatically enables constant heating during cold winter months up to -20°C



Concrete base with installation channels for DOCKSTOP sanitary station